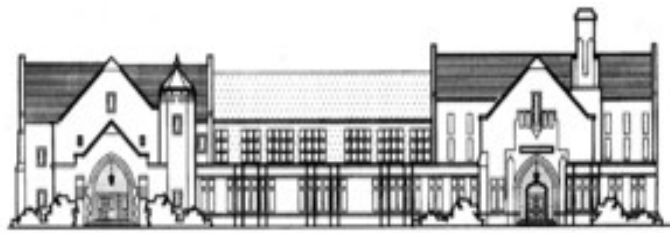




STUDY  
COLLABORATE  
DESIGN



RYE CITY  
SCHOOLS



BOE Meeting: 24 January 2012

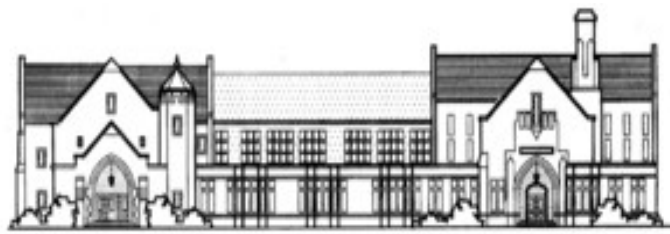


Rye City School District  
Board of Education Meeting  
24 January 2012

District Capital Planning  
Status Update



STUDY  
COLLABORATE  
DESIGN



RYE CITY  
SCHOOLS



BOE Meeting: 24 January 2012



## Meeting Agenda:

- Comparison of 2011 and 2012 Bond Programs
- Scoping Plans
- Administrative Items
  - Science Lab Conversion to General Classrooms
  - Classroom Inventory
  - Bond Cost Break Down
  - Other Items





# December 13<sup>th</sup> Capital Project Review:

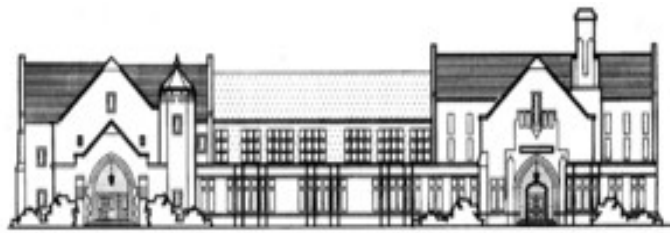


## o Items Previously Included in 2011 Bond

o 12 New science labs	\$ 15,140,235
o Remove portable classrooms	\$ 42,648
o Convert 7 science labs to 11 general classrooms	\$ 2,099,067
o Renovate 7 toilet rooms	\$ 373,798
o Renovate HS boys and girls locker rooms	\$ 725,251
o Renovate HS guidance suite	\$ 266,719
o Renovate MS nurses office	\$ 239,789
o MEP upgrades, piping/pumps/asbestos floor	\$ 702,370
o Code and SED upgrades	\$ 300,000
o Power upgrades	\$ 106,619

---

**Total** **\$ 19,996,000**

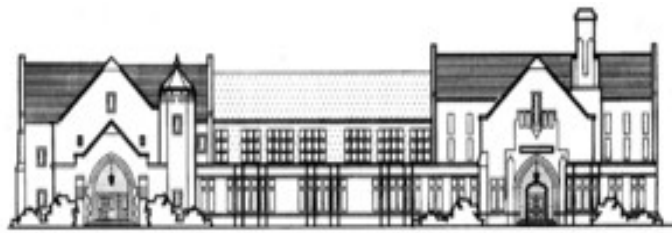


# December 13<sup>th</sup> Capital Project Review:

o Proposal for 2012 Bond	
o 12 New science labs (Removed future 3 <sup>rd</sup> story provisions = -\$300,000)	\$ 14,773,749
o Remove portable classrooms	Included in Addition
o Convert 7 science rooms to <del>11</del> 9 general classrooms	\$ 1,158,147
<del>o Renovate 7 Toilet rooms</del>	\$ 0
<del>o Renovate HS boys and girls locker rooms</del>	\$ 0
<del>o Renovate HS guidance suite</del>	\$ 0
<del>o Renovate MS nurses office</del>	\$ 0
<del>o MEP upgrades, piping/pumps/asbestos floor</del>	\$ 0
o Code and SED upgrades	\$ 418,756
o Upgrade Power (to the 9 renovated classrooms)	Included in Code/SED
<b>Total</b>	<b>\$ 16,350,651</b>



STUDY  
COLLABORATE  
DESIGN



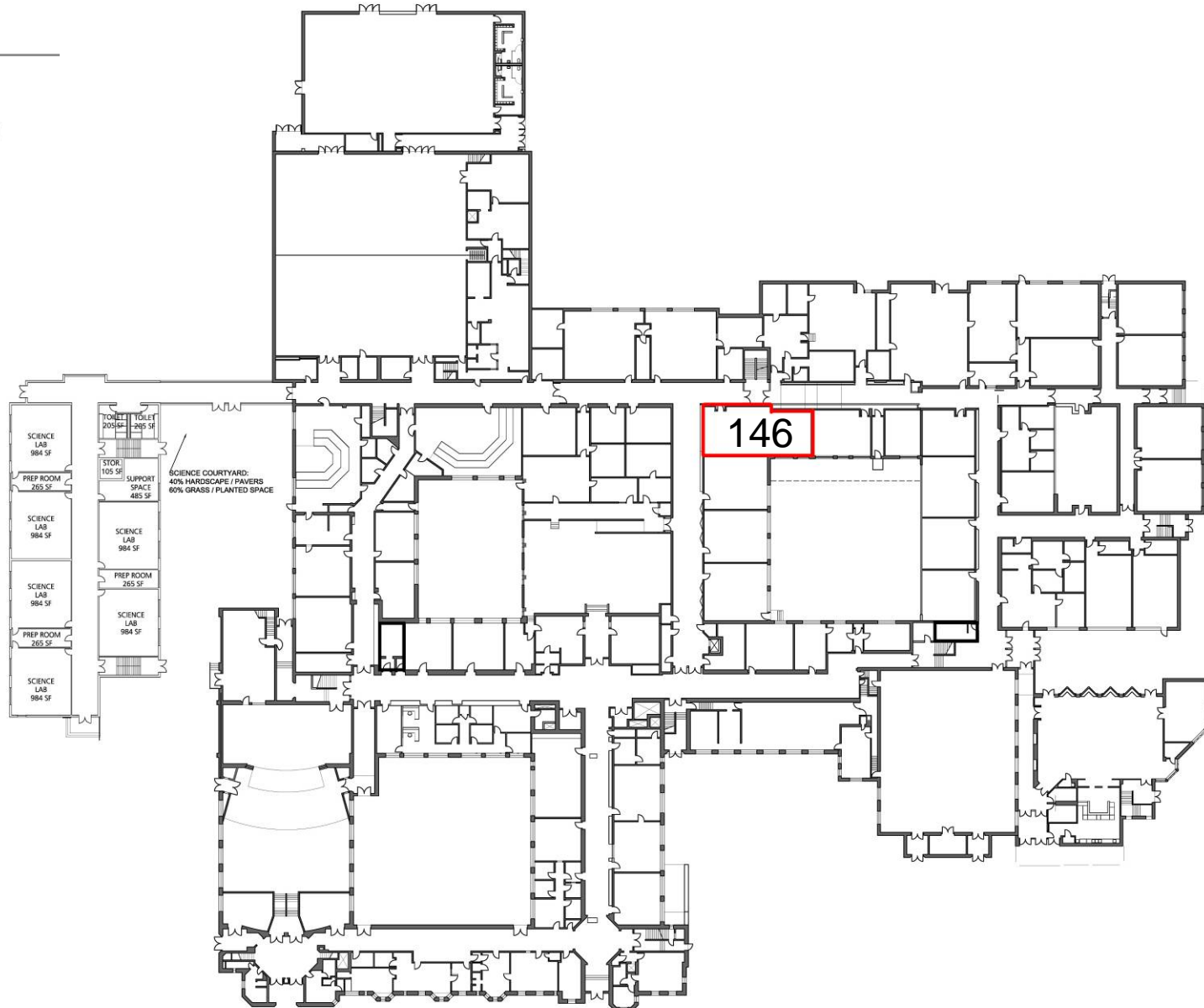
BOE Meeting: 24 January 2012

# First Floor Scoping Plan:



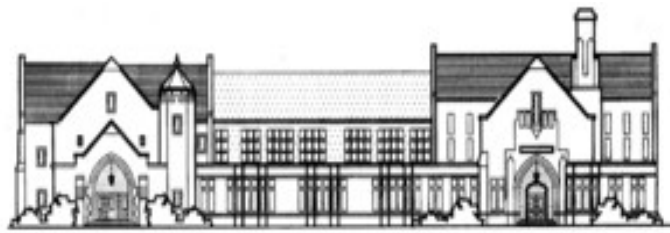
## LEGEND

- SCIENCE LAB CONVERSION
- SCIENCE LAB LIGHT RENOVATION





STUDY  
COLLABORATE  
DESIGN



RYE CITY  
SCHOOLS



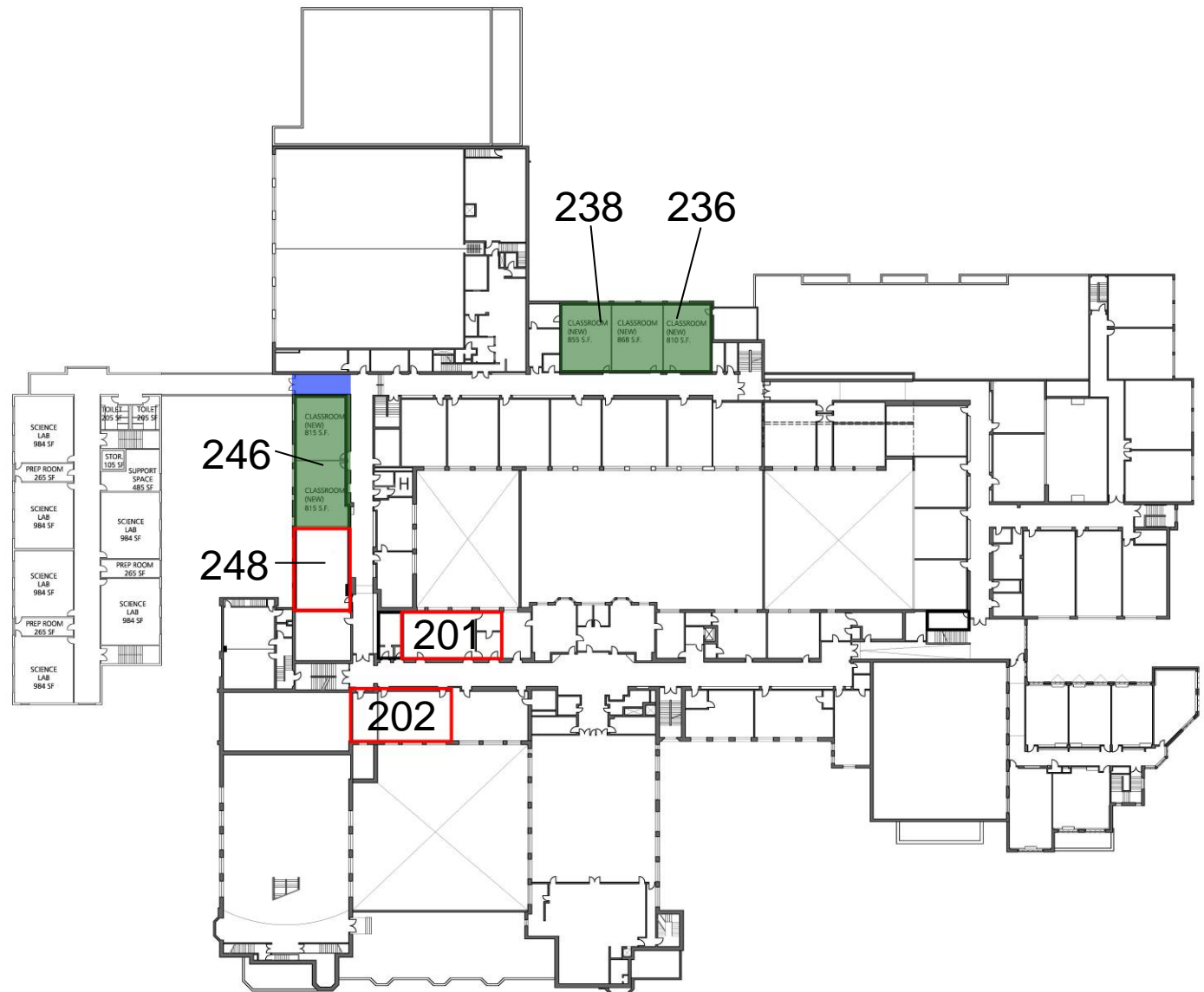
BOE Meeting: 24 January 2012

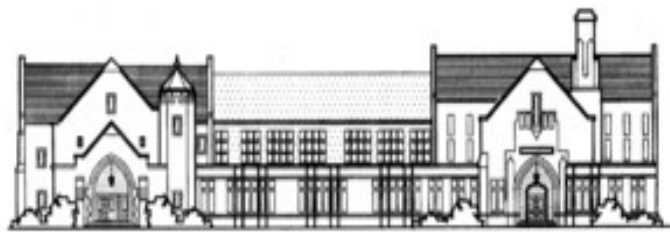


# Second Floor Scoping Plan:

## LEGEND

- SCIENCE LAB CONVERSION
- SCIENCE LAB LIGHT RENOVATION
- CORRIDOR TO NEW ADDITION





# Existing Science Labs Conversion to General Classrooms: Floor Area Summary:



- \* Conversion from 7 Science Labs to 9 General Classrooms
- \* Convert rooms 236, 238, and prep room into 3 General Classrooms
- \* Convert room 246 into 2 General Classrooms
- \* Light renovations to convert rooms 146, 201, 202, and 248 to General Classrooms
- \* Light renovations: remove science casework and replace with general classroom shelving, replace VAT flooring with VCT flooring / restore wood floors, paint room and ceiling, new furniture, power upgrades, technology upgrades
- \* Gut renovations: remove science casework and replace with general classroom shelving, replace VAT flooring with VCT flooring / restore wood floors, relocate walls, replace flooring, new ceilings, upgrade heating and ventilation, technology upgrades

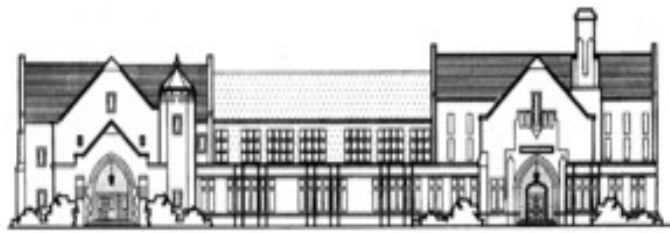
Room Number	Floor Area (SF)
146	1,250
201	1,500
202	1,220
236	1,088
238	1,497
246	1,690
248	1,140

<b>Total Aggregate Area</b>
9,385

\* Total Aggregate Cost = \$1,158,147



STUDY  
COLLABORATE  
DESIGN



RYE CITY  
SCHOOLS



BOE Meeting: 24 January 2012

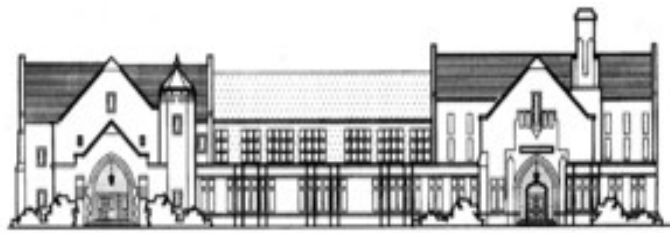
# Classroom Inventory



- + 12 New Science Classrooms (Addition)
  - + 2 General Classrooms (Reclaim)
  - 4 General Classrooms (Remove Portables)
- 

+ 10 Net Gain Classrooms





# Bond Cost Break Down:



○ New 12 Classroom Addition	\$ 14,773,749
○ Interior Reconstruction Measures	\$ 1,158,147
○ SED / Code Compliance Measures	\$ 418,756
<hr/>	
○ Total Bond Cost	\$ 16,350,651

## Bond Cost / SF Review:

Classroom Addition = (+/-) \$590/sf

Classrooms / Halls / Corridor = \$301.73/sf (construction cost = \$357.56/sf)

Technology = \$7.00/sf (construction cost = \$8.30/sf)

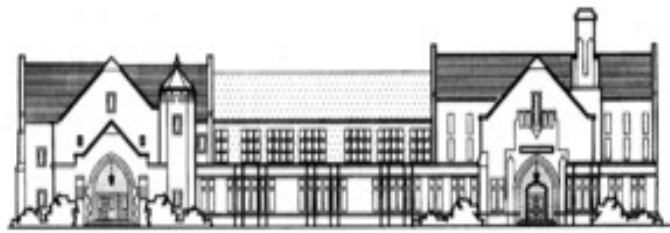
Furniture / Equipment / Casework = \$60.07/sf (construction cost = \$71.19/sf)

Sitework = \$50.85/sf (construction cost = \$60.27/sf)

Existing Lab Conversions = (+/-) \$125/sf



STUDY  
COLLABORATE  
DESIGN



RYE CITY  
SCHOOLS



BOE Meeting: 24 January 2012

## Next Steps:

- Additional information required by BOE?
- Other Items?



## Questions, Comments, Concerns?